

e·tron™

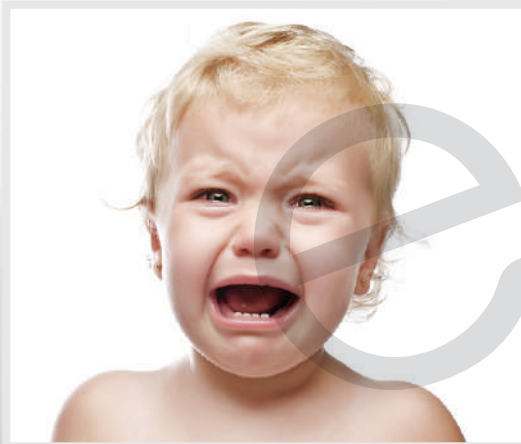
e·ions®

# 2 SEC INSTANT HOT WATER DISPENSER

ENERGY SAVING | TIME SAVING | DISPENSE HOT WATER INSTANTLY



# DO YOU FEEL FRUSTRATED WITH THESE **PROBLEMS?**



When the baby cries for  
milk in the middle of  
the night



Your guests have to wait  
a long time for their tea?



Scaling in the liners of your  
water dispenser

# e·tron™



e·tron™  
Instant Hot Water in 2 sec

Boiling water with a temperature of 100 C in just 2 seconds

VS



Traditional  
Electric Kettle

5 - 8 minutes

## BOILING SPEED

Energy-saving/standby mode energy consumption is only 9 voltage per year

## CONSUMPTION OF ENERGY

The continuous boiling of water will consume large amounts of energy

Dispense water instantly, boil dry protection no shortage of water, overflow prevention and other safety features

## WATER IS SAFE

The constant re-boiling of water can be hazardous to health

# e·tron™



e·tron™  
Instant Hot Water in 2 sec

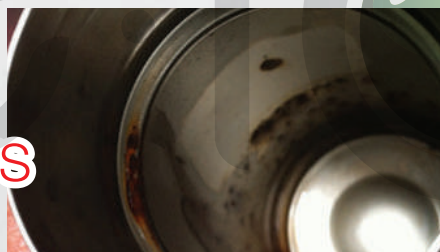
VS



Traditional  
Electric Kettle



Food Grade Material  
Bottle-grade PP material

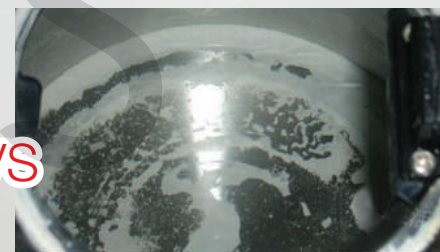


Metal water tank  
Releasing heavy metals

VS



Healthy  
One-time heating



Harmful  
Repeated boiling

VS



Power saving  
Boiling water in 2 seconds



Power consumption waste  
Takes long time to boil

VS



Fresh  
Heat water just when  
you need it



Metamorphism  
Repeated heating

VS

# 2 SEC INSTANT HOT WATER DISPENSER (MANUAL)

## HEATING

### 4D SURROUND

ANNULAR HEATING

#### Intelligent Control

Comfort, well-being and  
quality of life

## SAFETY

### LARGE CAPACITY

304 STAINLESS STEEL

Healthy and Safe  
Odorless in hot water



Capacity : 3000ML

## PROTECT

### MECHANICAL INTIMATE PROTECTION

Help Prevent Burns



Smart mechanical  
button control



Longer water outlet  
more concentrated water flow



Plastic interface



Waterproof base

## CONTROL

### FEATURES BUTTON

VISUAL DISPLAY

Rotation control

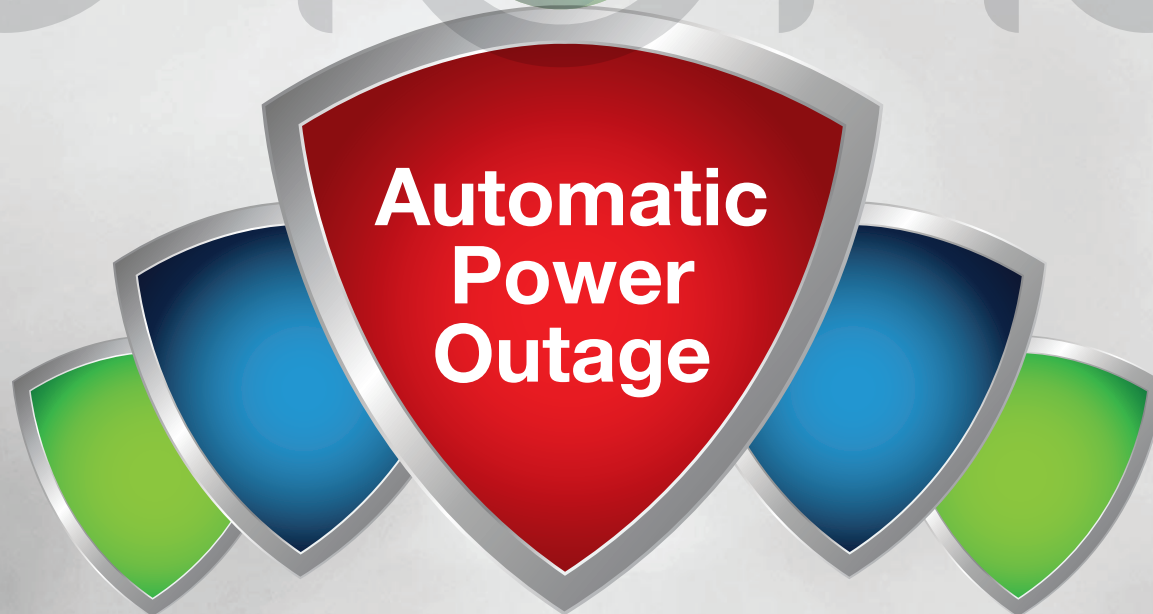
Intelligent function display



e·tron™

# Automatic Power Outage when Water Shortage

When device detects water shortage, protective device will stop the water supply automatically, and water shortage induction light will turn on.



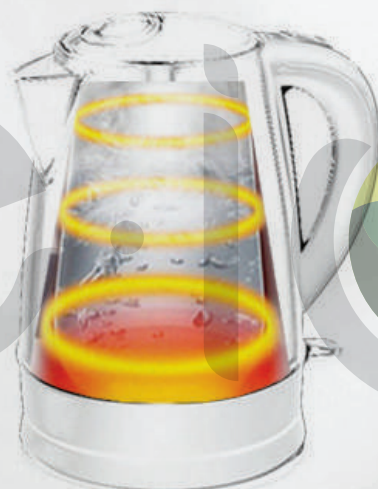
# Safe & Prevent Burns

etron protecting your family



▲  
Whole kettle of  
boiled water

risk to get burn  
caused by kettle  
overturning



▲  
Bottom heating  
transfer

both kettle surface  
and inner is hot

**Overturned water is  
room temperature water**

- ✓ Nonliner heat conduction
- ✓ No heating water source
- ✓ No risk of burns

